



Subject:

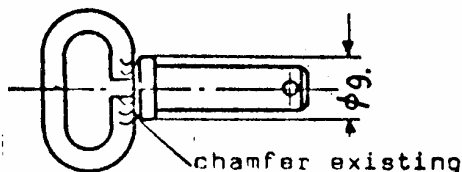
- 1.) Elevator connection bolt
- 2.) Airbrakes connection bolt (only by install. of Schemp-Hirth-Airbrakes)

Effectivity:

- 1.) Elevator-connection bolt
Sailplane Mü 13E "Bergfalke"
" Bergfalke II
" Bergfalke II-55
" Bergfalke III
" Bergfalke IV } all Serialnumbers
- 2.) Airbrake-connection bolts
Sailplane Bergfalke III with mod. 27
(model with Schemp-Hirth-airbrakes)
Sailplane Bergfalke IV all Serialnumbers

Accomplishment: Instruction 1 and 2 before next flight
Instruction 3 at the latest before 31.8.85

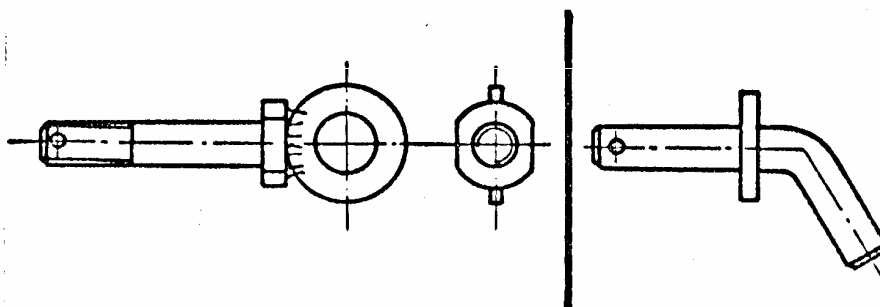
Reason: On some "Bergfalke" Sailplanes (not all), a connection bolt for elevator and airbrakes was installed, made of an eyebolt with a welded handle (made of welding rod) (see sketch)



Under bad circumstances the molecular of the eyebolt (DIN material), can change during the welding of the little handle to the bolt.
There has been a damage to a bolt for the airbrakes.
For the safety, it is necessary to inspect the DIN-bolts for eventual cracks and before 31.8.1985 replace them against bolts made of "Aircraftsteel" (1.7214.4 or 1.7734.4 (see drawing Instruction 3)).

Instructions: Instruction 1
Inspect if the connection bolts are affected.
Not affected are (these bolts are already made of "Aircraft steel"):

- a) "halfautomatic" elevator connection bolts (the bolt slides in a tube which is welded to the elevator lever).
- b) elevator connection bolts in the following construction

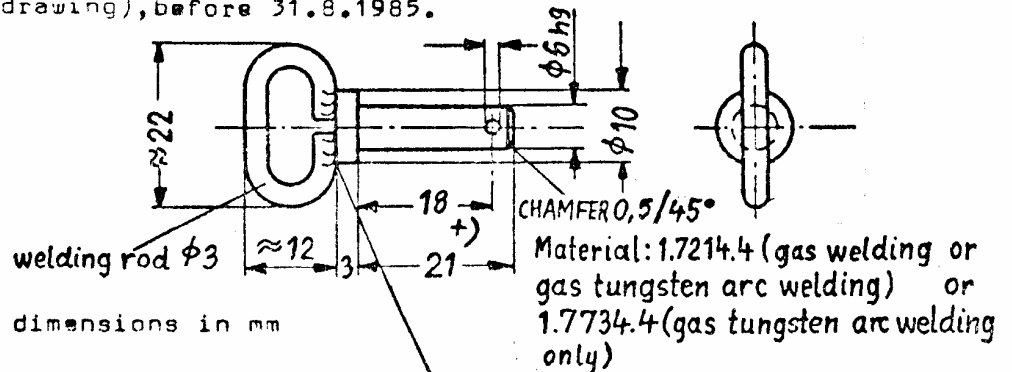


Instruction 2

Before next flight the connection bolts must be inspected by using a magnifying glass of at least 10 x power. If cracks are found, then the bolt must be replaced immediately. If no cracks are found the sailplane may be flown until 31.8.85.

Instruction 3

If the connection bolts are not made of "Aircraftsteel", they must be replaced against such of aircraftsteel (see drawing), before 31.8.1985.



here as difference to the eyebolt (from DIN material) no

- +) a certain amount of Bergfalke's are "amateur-build" ^{chamfer}. Therefore there may be differences in the length of the bolts, and they must be fitted to the actual Bergfalke. In any case with the new connection bolts the controls must be checked carefully on function and clearance.

Material: see drawing under Instruction 3

Weight and balance: Not affected

Remarks: Accomplishments are to be performed by an authorized workshop.
Accomplishments of the actions are to be entered in the aircraft logbook by a licensed inspector.

SCHEIBE FLUGZEUGBAU GMBH
Dachau, Aug. Pfaltz-Str. 23

13. 5. 1985

Approval of translation has been done by best knowledge and judgement - In any case the original text in German language is authoritative.



29. Mai 1985