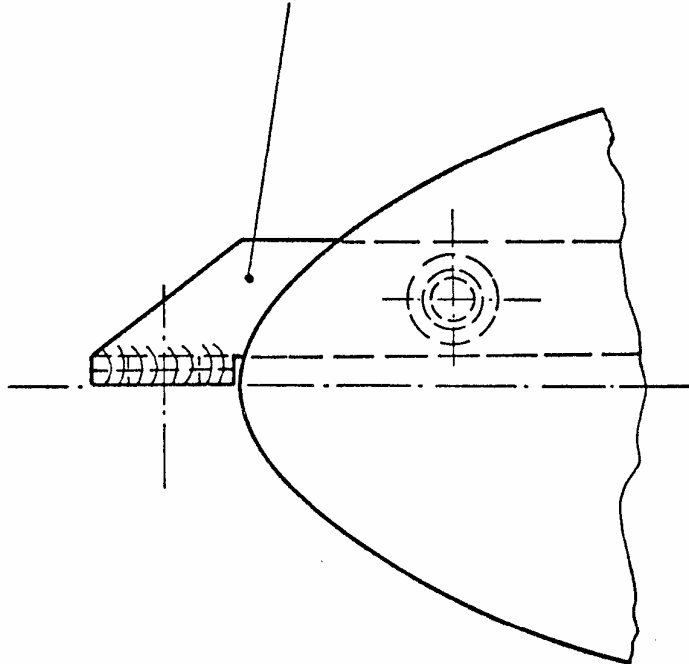




Subject: Front tailplane fitting
Effectivity: Motorglider SF 25 all models, all serial numbers
Accomplishment: Before 31st of March 1982
Reason: The front tailplane fitting must be inspected for possible defects of fabrication in the welding seams.
Actions: 1. Dismount the tailplane from the fuselage

Front tailplane fitting



2. Remove the paint from the front tailplane fitting (see Sketch)
3. Inspect the fitting in the area of the welding seams for cracks by using a magnifying glass of at least 5 x power.
4. If cracks are found, then a new fitting must be mounted prior to the next flight. The defective fitting must be sent to the manufacturer (giving the total number of flight hours), with the request for a new fitting.

The new fitting is to be installed according to the Operational Instruction attached to this technical note.

5. If no cracks are found, the fitting is to be protected against corrosion with primer (for example Eintopf-Primer green LC 30-6101 from BASF), and the paint (in the colour of the motorglider).

Material: As discribed under actions

Weight and Balance: no influence

Remarks: Accomplishment of actions 1,2 and 5 can be performed by a skilled person.
Accomplishment of action 3 by a licensed inspector.
Accomplishment of action 4 by an authorized workshop or person only.
Accomplishment of the actions is to be entered in the aircraft logbook by a licensed inspector.

SCHEIBE FLUGZEUGBAU GMBH
Dachau, Aug. Pfaltz-Str. 23

1. 2. 1982.